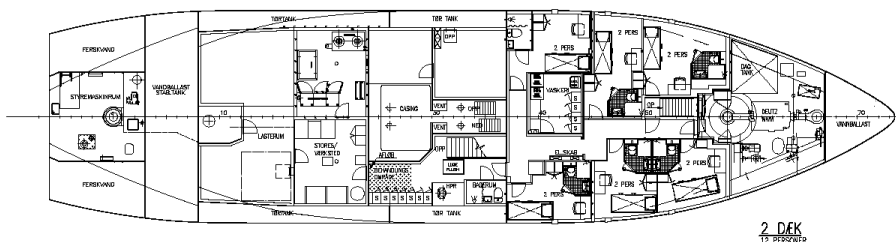
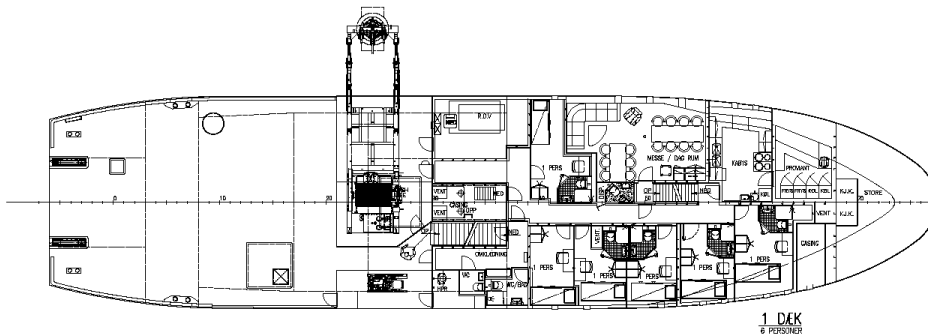
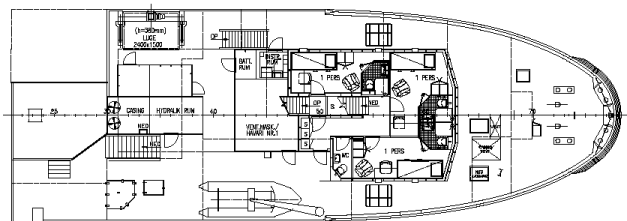
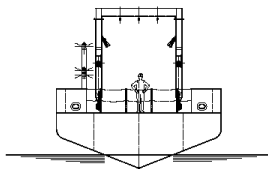
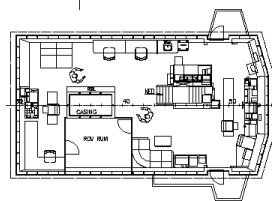
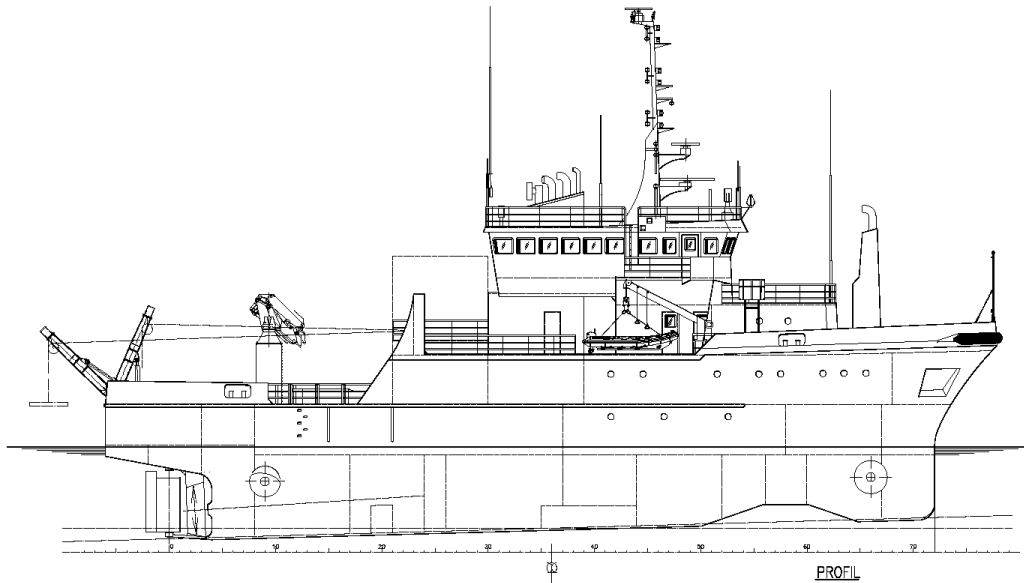
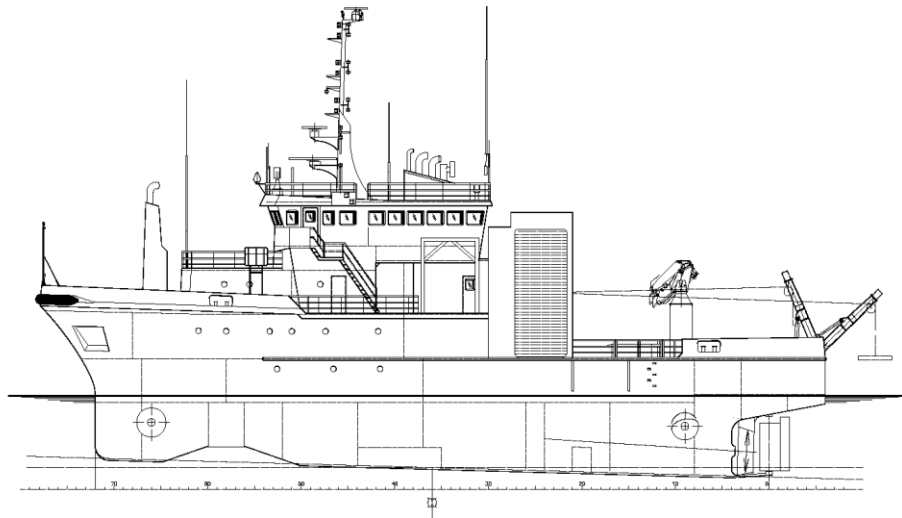


# DP1 ROV Survey Vessel "IDEFIX"





#### PRINCIPAL PARTICULARS

Built 1981, Norway  
Rebuilt 2015, Denmark  
Class DNV  
Notation +1A1 ICE-C DYNPOS AUT DP1  
Flag Denmark  
IMO 8019409  
Length 42,25 meter  
Breath 10,0 meter  
Draft 5,0 meter  
GRT / NRT 586 / 176

#### ACCOMODATION

9 X 1 berth cabins  
6 X 2 berth cabins  
Fully Air Conditioning

#### PROPULSION SYSTEM

Main Engine 1 x 969 KW CAT C-32  
Main Generator 2 x 275 KWe CAT C-18  
Emg. Generator 1 x 130 KWe CAT C-7  
Bow Waterjet 400 KW - 360° revolving  
Bow Thruster 500 KW  
Stern Thruster 500 KW

#### ROV SYSTEMS

LARS System incl. TMS. MacArtney for K-30  
LARS System. Spec. For K-10  
ROV 1. Sperre K-10. Inspection  
ROV 2. Sperre K-30. Work Class

#### DYNAMIC POSITIONING

Rolls-Royce Icon DP1  
Rolls-Royce Bridge Integrated Chair/Joystick

#### ELECTRONICS & CONTROLS

GMDSS Area 3 Compromising  
SSB. 1 Unit DSC  
Inmarsat C2. A1, A2, A3. 2 Units  
VHF. 2 Units DSC  
VHF portable. 3 Units  
Navtex receiver. 1 Unit  
SART. 1 Unit  
EPIRB. 2 Units  
Radar Transas. 3 cm. 1 Unit  
Radar Sperry. 10 cm. 1 Unit  
Echo Sounder. Multi Beam Kongsberg EM710. 0-800 meter  
Gyro Compass. 1 Unit  
Magnetic Compass. 1 Unit  
Auto Pilot. 1 Unit  
AIS. 1 Unit  
Speed Log. 1 Unit  
HiPAP. Acoustic underwater positioning and navigation sys.

#### MISCELLANEOUS

Life Rafts SOLAS approved 2 x 25 pax  
2 x 12 pax  
MOB Boat 1 x 6 pax semi-rigid inflatable  
c/w outboard motor  
Stern 10-ton A-Frame for launch and recovery  
Crane KBC Palfinger SWL 3,37 T / 12,2 m